

Safe. Simple. Effective.



FABRIC CARE



Ariel Professional Powder Original

Laundry detergent - powder

Effective on 100% of greasy stain types*

🎯 KEY BENEFITS

- Outstanding cleaning in 1-wash even at 30°C
- Stain removal
- Outstanding whiteness
- Odour protection
- With anti-residue technology to help prevent powder residues on fabric and minimize rewash



*based on typical types of greasy stains found in professional businesses

Safe. Simple. Effective.



FABRIC CARE / ARIEL PROFESSIONAL POWDER ORIGINAL

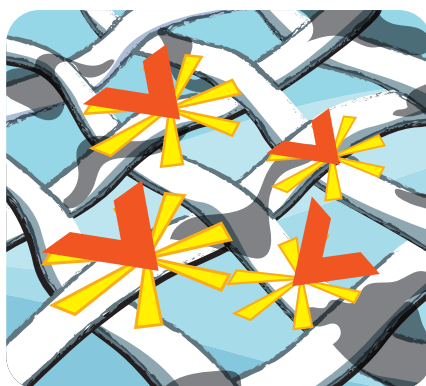
TECHNOLOGY

Ariel Professional Powder stain removal technologies

Ariel Professional Powder technologies act in synergy to ensure the removal of the tough stains professionals face on a daily basis.



Its **multi-enzyme** system breaks different kinds of stains into smaller pieces.



The **multi-surfactants** system dissolves and removes pieces of stain which are then rinsed away.



Its **multi-polymer system** shields different types of fabrics from soil re-deposition during the wash. Its **multi-whiteness technology** makes whites whiter at different wash temperatures and prevents whites from yellowing after multiple washes.

TECHNICAL DESCRIPTION

EAN code:	
Appearance:	white powder with multi-coloured speckles
Smell:	Pleasant
pH:	10.9 (at 1% solution)
Water solubility	Soluble
Size	

PROTOCOL OF USE

20°C → 95°C

1

85 ml
= +/- 55g

2

6-8 kg	85 ml	155 ml	225 ml
9+ kg	155 ml	225 ml	295 ml

4-5 kg $\frac{1}{2}$ scoop (*) = 85 ml $\frac{1}{2}$ scoop (**)

3

*Soft water / Medium water **Hard water

WHERE TO USE

- Safe to use on all types of white and colored textiles.
- Can be used at wash temperatures from 20°C till 95°C. Always follow the wash instructions as mentioned on the fabric label.
- Can be used at all water hardness. Adjust the dosage according to your local water hardness as recommended in the dosing instructions.

WHERE NOT TO USE

- Cannot be used for wool & silk textiles.

SAFETY INSTRUCTIONS

Please make sure your employees read and understood the product label and your COSHH assessment (Chemical Risk Assessment in EU) before using this product. The label contains directions for use and both label and SDS contain hazard warnings, precautionary statements, first aid procedures and storage information. SDS are available on-line at our website www.pgpro-msds.com or can be provided to you via the call center (+33-XXX-XXXX).